

This quick guide explains basic function settings and how to shoot and playback images. You can take this guide with you for shooting. For detailed instructions, refer to the EOS 50D Instruction Manual.



English Edition
© CANON INC. 2008

Quick Start Guide

1 **Insert the battery.**

2 **Attach the lens.**
When attaching an EF-S lens, align it with the white index on the camera. For other lenses, align it with the red index.

3 **Set the lens focus mode switch to <AF>.**

4 **Open the cover and insert a CF card.**

5 **Set the power switch to <ON>.**

6 **Set the Mode Dial to <□> (Full Auto).**
All the necessary camera settings will be set automatically.

7 **Focus the subject.**
Aim the AF point over the subject and press the shutter button halfway to autofocus.

8 **Take the picture.**
Press the shutter button completely to take the picture.

9 **View the image.**
The captured image will be displayed for about 2 sec. on the LCD monitor.

The ★ on the right of the function indicates that the function is available only in Creative Zone modes (P, Tv, Av, M, A-DEP).

Battery Life

Temperature	No Flash	50% Flash Use
At 23°C / 73°F	Approx. 800 shots	Approx. 640 shots

Image Playback

Playback **Erase** **INFO. Shooting information**

Select image

Index **Magnify**

Preparation

Menu Operations

<MENU> button **LCD monitor** **<MAIN> Main Dial** **<SET> Quick Control Dial**

1. Press the <MENU> button to display the menu.
2. Turn the <MAIN> dial to select the tab, then turn the <SET> dial to select the desired item.
3. Press <SET> to display the setting.
4. After setting the item, press <SET>.

Basic Zone Modes

Quality **Red-eye On/Off** Off **Beep** On

Creative Zone Modes

Quality **Red-eye On/Off** Off **Beep** On **Shoot w/o card** On **Review time** 2 sec.

Menu items **Menu settings**

Menu Settings

Shooting 1

Quality **Red-eye On/Off** Off **Beep** On **Shoot w/o card** On **Review time** 2 sec. **Peripheral illumin. correct.**

Playback 1

Protect images **Rotate** **Erase images** **Print order** **Transfer order**

Set-up 1

Auto power off 1 min. **Auto rotate** On **Language** English **Format** **File numbering** Continuous **Select folder**

Shooting 2

Expo. comp./AEB -2..1..0..1..:2 **White balance** AWB **WB SHIFT/BKT** 0,0/±0 **Color space** sRGB **Picture Style** Standard **Dust Delete Data**

Playback 2

Highlight alert Disable **AF point disp.** Disable **Histogram** Brightness **Print order** **Image jump w/** 10 images

Set-up 2

LCD brightness **Date/Time** 08/24/ '08 13:10 **Language** English **Video system** NTSC **Sensor cleaning** **Live View function settings**

These screens apply when a Creative Zone mode is set. In the Basic Zone modes, the [C]/[P]/[★] tab and [▶] are not displayed.

Set-up 3

INFO. button Normal disp. **Flash control** **Camera user setting** **Clear settings** **Firmware Ver.** 1.0.0

Custom Functions

C.Fn I :Exposure **C.Fn II :Image** **C.Fn III :Autofocus/Drive** **C.Fn IV :Operation/Others** **Clear all Custom Func. (C.Fn)**

Quick Control Screen

Press <Q.C. > straight down. The Quick Control screen will appear.

Shutter speed 1/125 **Aperture** F8.0 **ISO speed** ISO AUTO **Exposure compensation/AEB setting** -2..1..0..1..:2 **Shooting mode** M **AF point** **Image-recording quality** **Flash exposure comp.** -2/3 **Picture Style** **AF mode** **Highlight tone priority** **Flash exposure compensation** **Metering mode** **Drive mode** **White balance**

- Tilt the <Q.C. > to select the function, then turn the <MAIN> or <SET> dial to set it.
- In the Basic Zone modes, you can select certain drive modes and the image-recording quality.

Image-recording Quality

● Select [Q] Quality.

Image-recording quality

Quality 15M 4752x3168 [205] **Possible shots**

RAW RAW **RAW: Turn the <MAIN> dial to select the quality.**

JPEG **JPEG: Turn the <SET> dial to select the quality.**

Picture Style

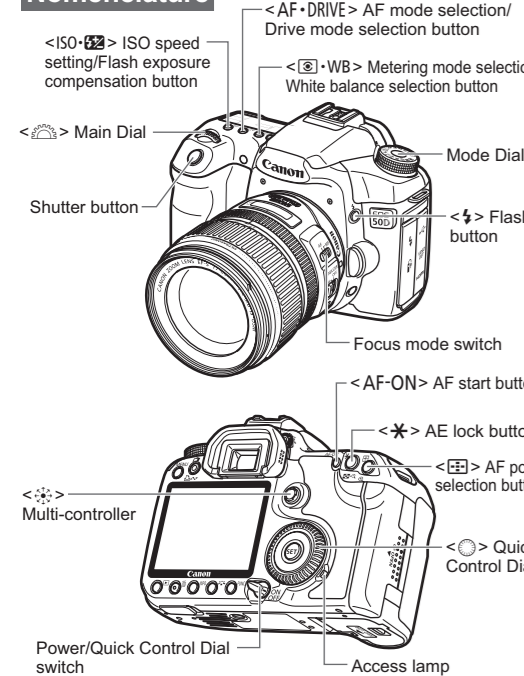
● Press the <Q.C. > button. ● Turn the <MAIN> or <SET> dial to select the Picture Style.

Style	Description
Standard	Vivid colors and sharp images.
Portrait	Nice skin tones and slightly sharp images.
Landscape	Vivid blue skies and greenery and very sharp images.
Monochrome	Black-and-white images.

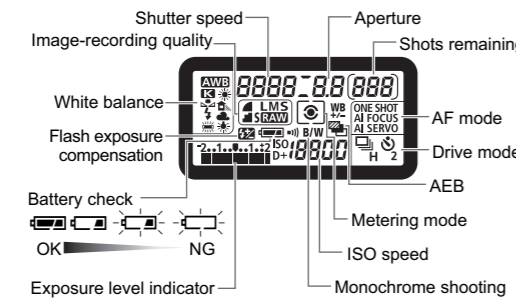
● For <[N]> (Neutral) and <[F]> (Faithful), see the camera's instruction manual.

Shooting Operation

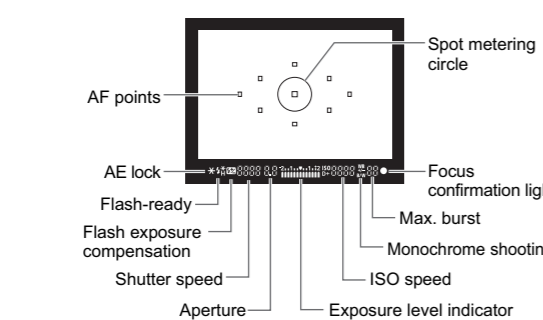
Nomenclature



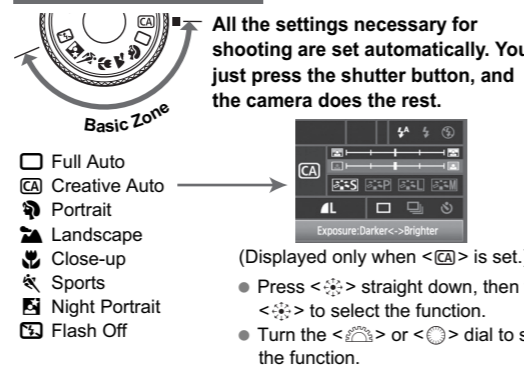
LCD Panel



Viewfinder Information



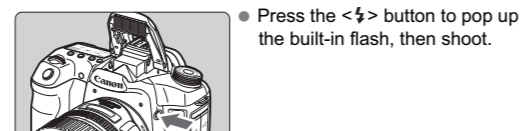
Basic Zone Modes



Using the Built-in Flash

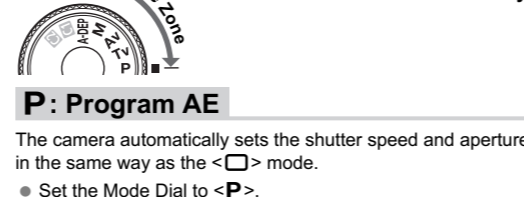
In Basic Zone Modes
If necessary, the built-in flash will pop-up automatically in low-light or backlit conditions (except in the <Landscape> <Sports> <Night Portrait> modes).

Creative Zone Modes



Creative Zone Modes

* Set the power switch to <ON>.
You can change the camera settings as desired to shoot in various ways.



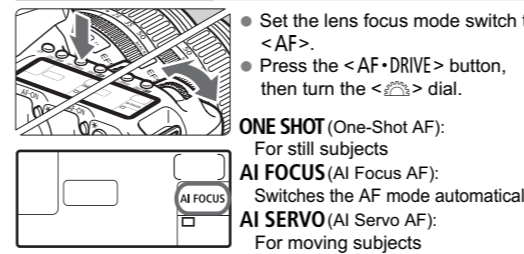
P: Program AE

The camera automatically sets the shutter speed and aperture in the same way as the <Full Auto> mode.
● Set the Mode Dial to <P>.

Tv: Shutter-priority AE

● Set the Mode Dial to <Tv>.
● Turn the <Main Dial> to set the desired shutter speed, then focus the subject.
▶ The aperture will be set automatically.
● If the aperture display blinks, turn the <Main Dial> until it stops blinking.

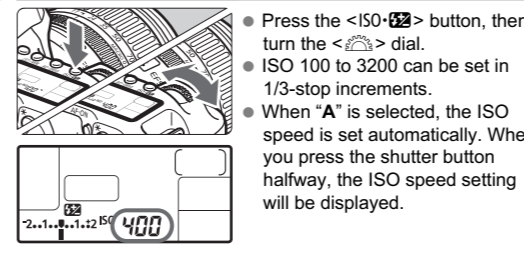
AF: AF Mode



AF Point

● Press the <AF-ON> button, then look through the viewfinder.
● The AF point selection will change in the direction you tilt the <Multi-controller>. If you keep tilting it in the same direction, it will toggle between manual and automatic AF point selection.
● When all AF points light up, automatic AF point selection will be set.
● When you turn the <Main Dial> or <Quick Control Dial>, the AF point selection will change in the respective direction.

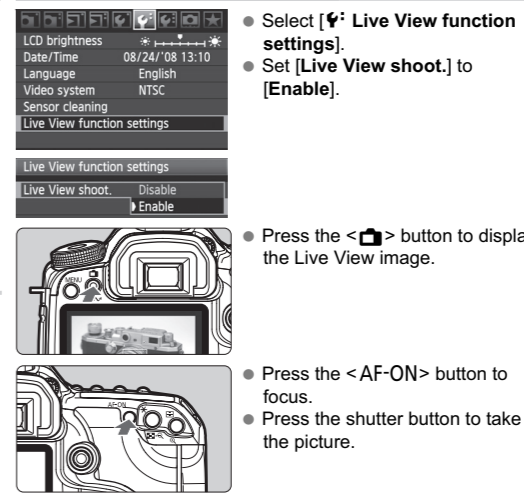
ISO: ISO Speed



Drive Mode

● Press the <AF-DRIVE> button, then turn the <Quick Control Dial>.
□: Single shooting
H: High-speed continuous shooting
L: Low-speed continuous shooting
10: 10-sec. self-timer*
2: 2-sec. self-timer
* This drive mode <10> can be set in all shooting modes.

Live View Shooting



Battery Life with Live View Shooting

Temperature	No Flash	50% Flash Use
At 23°C / 73°F	Approx. 180 shots	Approx. 170 shots

Custom Functions

C.Fn I: Exposure

- Exposure level increments
- ISO speed setting increments
- ISO expansion
- Bracketing auto cancel
- Bracketing sequence
- Safety shift
- Flash sync. speed in Av mode

C.Fn II: Image

- Long exposure noise reduction
- High ISO speed noise reduction
- Highlight tone priority
- Auto Lighting Optimizer

C.Fn III: Autofocus/Drive

- Lens drive when AF impossible

- Lens AF stop button function
- AF point selection method
- Superimposed display
- AF-assist beam firing
- Mirror lockup
- AF Microadjustment

C.Fn IV: Operation/Others

- Shutter button/AF-ON button
- AF-ON/AE lock button switch
- Assign SET button
- Dial direction during Tv/Av
- Focusing screen
- Add original decision data
- Assign FUNC. button